

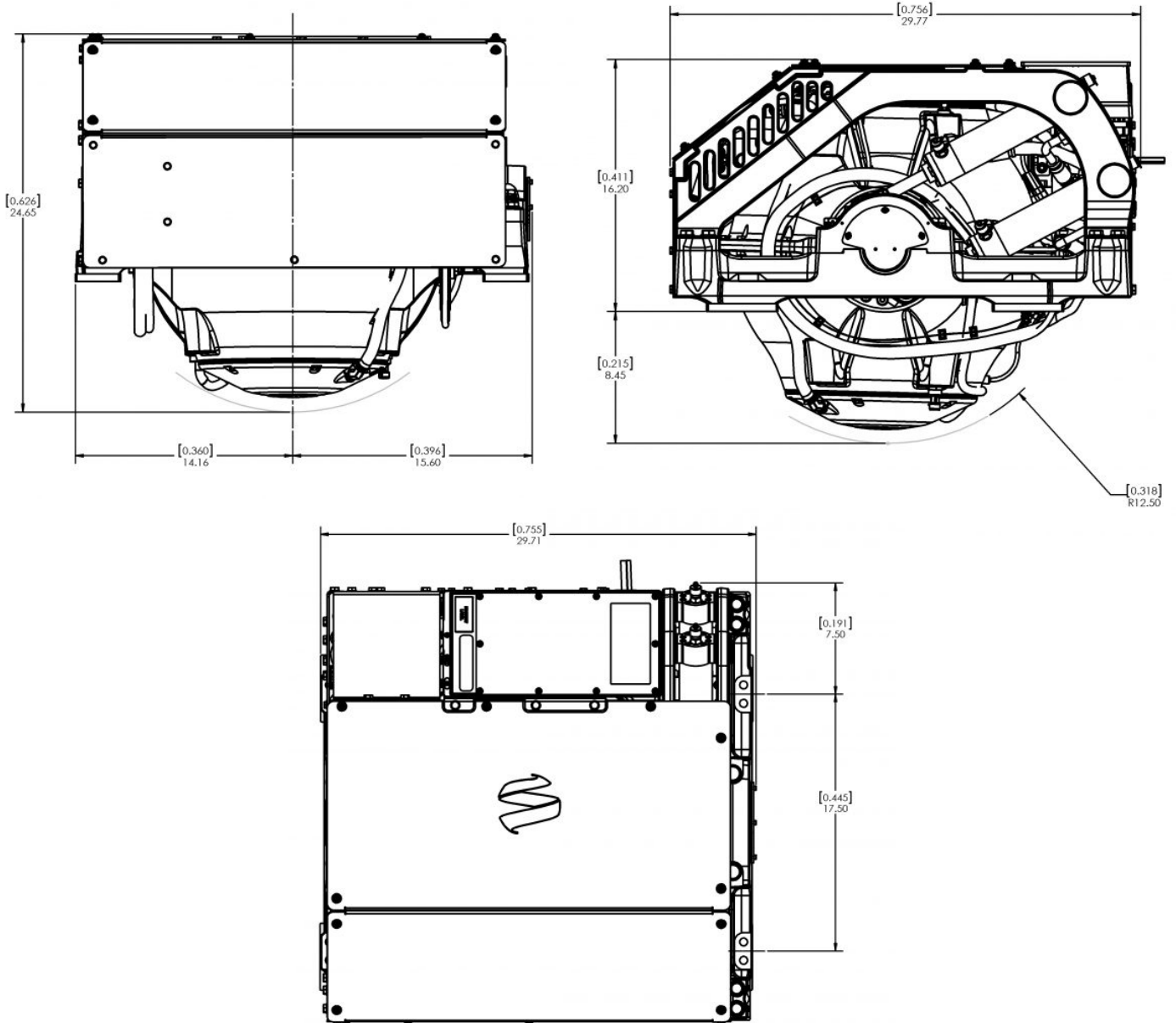
# TECHNICAL SPECIFICATIONS

Max Rated Speed	9,700 RPM
Angular Momentum at Max Rated RPM	6,000 N-M-S
Anti-Rolling Torque at Max Rated RPM	15,690 N-M
Spool-up Time to Max Rated RPM	42 minutes (9,700 RPM)
Spool-up Time to Stabilization	28 minutes (7,700 RPM)
Power Consumption	
Spool-Up Power	2300 Watts
Operating Power	1050 - 2300 Watts (Sea State Dependent)
AC Power Input	110 / 220 VAC, 50/60 Hz
Control Power	125 Watts
Control Power Input	12 VDC @ 10 Amps
Seawater Pump Power Input Over Current Protection based on installed pump rating	12 VDC @ 15 Amps Max
Weight	870 lbs (395 kg)
Envelope Dimensions	29.8 L x 29.7 W x 24.7 H (inches) 0.756 L x 0.755 W x 0.626 H (meters)
Noise Output	70-72 dBC at 1 meter
Seawater Supply to Heat Exchanger	30 LPM (8 GPM) maximum 9.5 LPM (2.5 GPM) minimum
Ambient Air Temperature	0° - 60° C (32° - 140° F)

Marine Service Asia offers the details of this device in good faith but cannot guarantee or warrant the accuracy of this information nor warrant the condition of the device.



# DRAWINGS



Marine Service Asia offers the details of this device in good faith but cannot guarantee or warrant the accuracy of this information nor warrant the condition of the device.